

# MONTHLY MEMBERSHIP PROGRESS REPORT

LOCATION MASSACHUSETTS

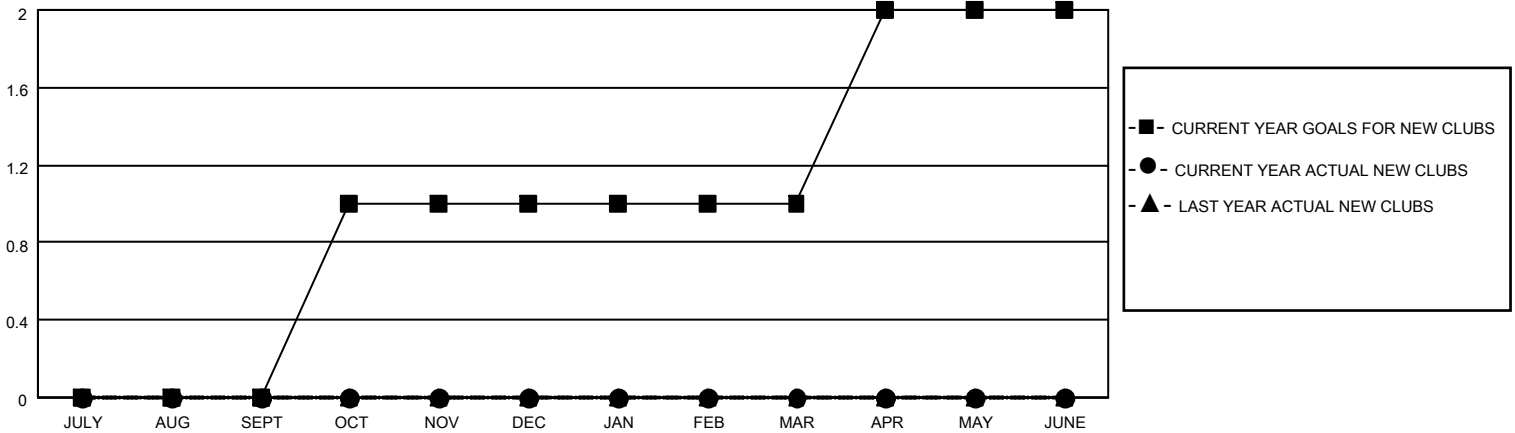
District 33 S

Results as of: 4/30/2023

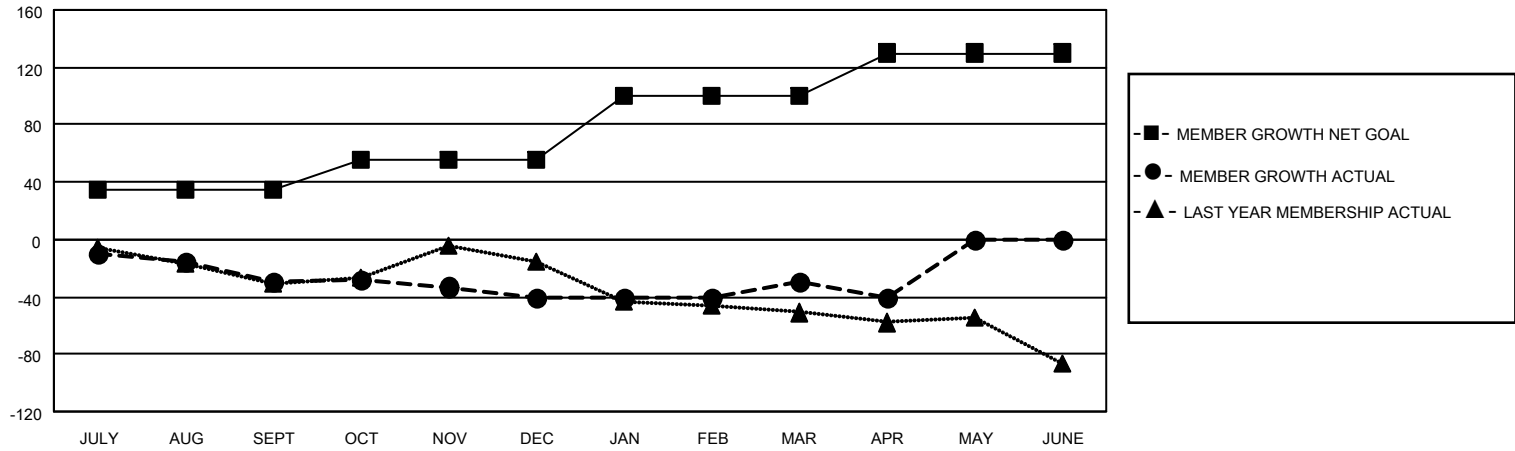
Clubs			
RESULTS FOR 2022-2023			
QUARTER	NEW CLUB GOAL	NEW CLUBS	DROPPED CLUBS
JULY/AUG/SEPT	0	0	0
OCT/NOV/DEC	1	0	0
JAN/FEB/MAR	0	0	0
APR/MAY/JUNE	1	0	0

Members			
RESULTS FOR 2022-2023			
QUARTER	MEMBER GROWTH NET GOAL	MEMBER GROWTH ACTUAL	DROPPED MEMBERS ACTUAL (including transfers)
JULY/AUG/SEPT	35	22	46
OCT/NOV/DEC	20	36	44
JAN/FEB/MAR	45	36	19
APR/MAY/JUNE	30	8	17

**GOALS AND ACTUAL NEW CLUBS CUMULATIVE**



**GOALS AND ACTUAL MEMBERS CUMULATIVE**



**DROPPED CLUBS: 0**

**21 CLUBS OF 48 ADDED 1 OR MORE NEW MEMBERS**

**GENDER DISTRIBUTION**

MALE	922 (60.94%)
FEMALE	590 (39.00%)
NON BINARY	0 (0.00%)
PREFER NOT TO ANSWER	1 (0.07%)

**DROPPED MEMBERS**

[CLICK HERE FOR CUMULATIVE MEMBERSHIP DATA](#)

DECEASED	28
CLUB CANCELLED	0
OTHER	98
<b>TOTAL</b>	<b>126</b>

TOTAL FAMILY UNIT MEMBERS 249

FAMILY MEMBERS PAYING HALF DUES 127